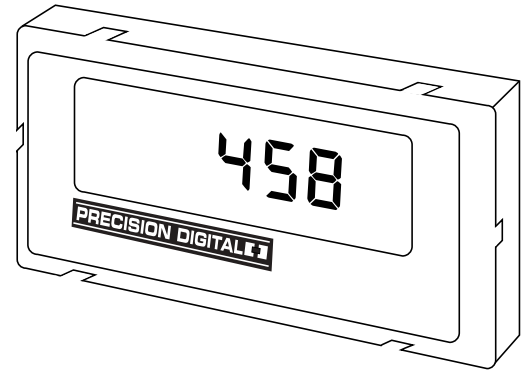
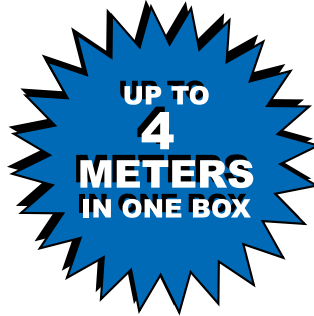
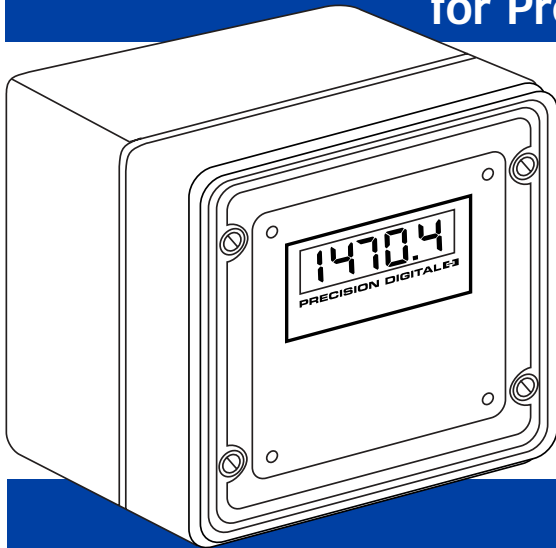
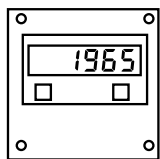


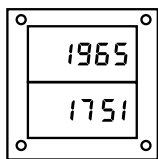
# NEMA 4X ENCLOSURES & NEMA 4X COVERS for Precision Digital Meters



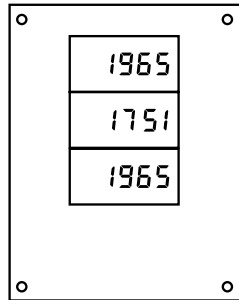
## NEMA 4X ENCLOSURES



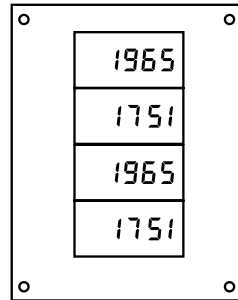
PDA2407



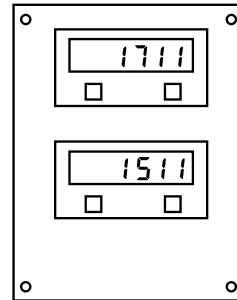
PDA2408



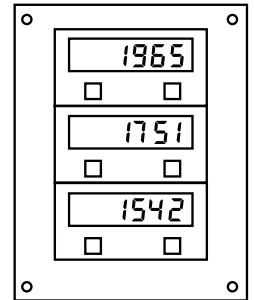
PDA2409



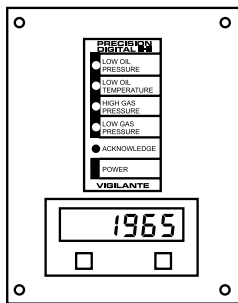
PDA2410



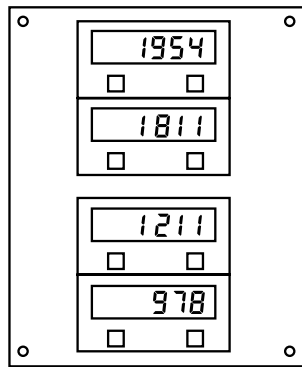
PDA2411



PDA2412



PDA2414



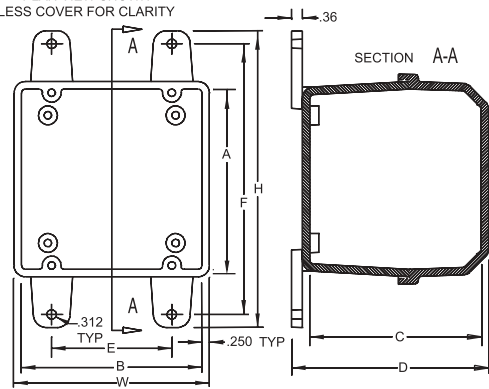
PDA2415

## ORDERING INFORMATION

Model	No. of Meters	Type Style	Overall Outside Dimensions (with brackets) (H x W x D)	Inside Dimensions (A x B x C)	Mounting Dimensions (F x E)	Weight
PDA2407	1	A, B or C	9.9 x 6.5 x 6.7 (251 x 165 x 170)	6.0 x 6.0 x 5.9 (152 x 152 x 151)	9.0 x 4.0 (228 x 102)	2.4 (1.1)
PDA2408	2	B				
PDA2409	3	B	13.9 x 8.5 x 6.7 (352 x 216 x 170)	10.0 x 8.0 x 5.9 (254 x 203 x 151)	13.0 x 6.0 (330 x 152)	4.1 (1.8)
PDA2410	4	B				
PDA2411	2	A, B or C				
PDA2412	3	A				
PDA2414	2	1 Type A, B or C; 1 PD141AFO	15.9 x 10.5 x 7.7 (403 x 267 x 195)	12.0 x 10.0 x 6.9 (305 x 254 x 176)	15.0 x 8.0 (381 x 203)	5.6 (2.5)
PDA2415	4	A				

## NEMA 4X ENCLOSURE DIMENSIONS

PLAN VIEW SHOWN  
LESS COVER FOR CLARITY



## NOTES:

- Dimensions are in inches (mm), weight is in pounds (kg)
- Type A meter bezel dimensions: 4.25" x 2.3" x 0.6" (108 mm x 59 mm x 15 mm), depth behind panel: 4.7" (119 mm) not including clearance for wiring (e.g. PD690).
- Type B meter bezel dimensions: 3.82" x 1.88" x 0.21" (97 mm x 48 mm x 5 mm), depth behind panel: 5.1" (130 mm) not including clearance for wiring (e.g. PD682).
- Type C meter bezel dimensions: 4.68" x 2.45" x 0.6" (119 mm x 62 mm x 15 mm), depth behind panel: 3.1" (79 mm) not including clearance for wiring (e.g. PD765).
- UL, CSA Type 4X, NEMA 4X enclosures material: Thermoplastic with clear polycarbonate covers.

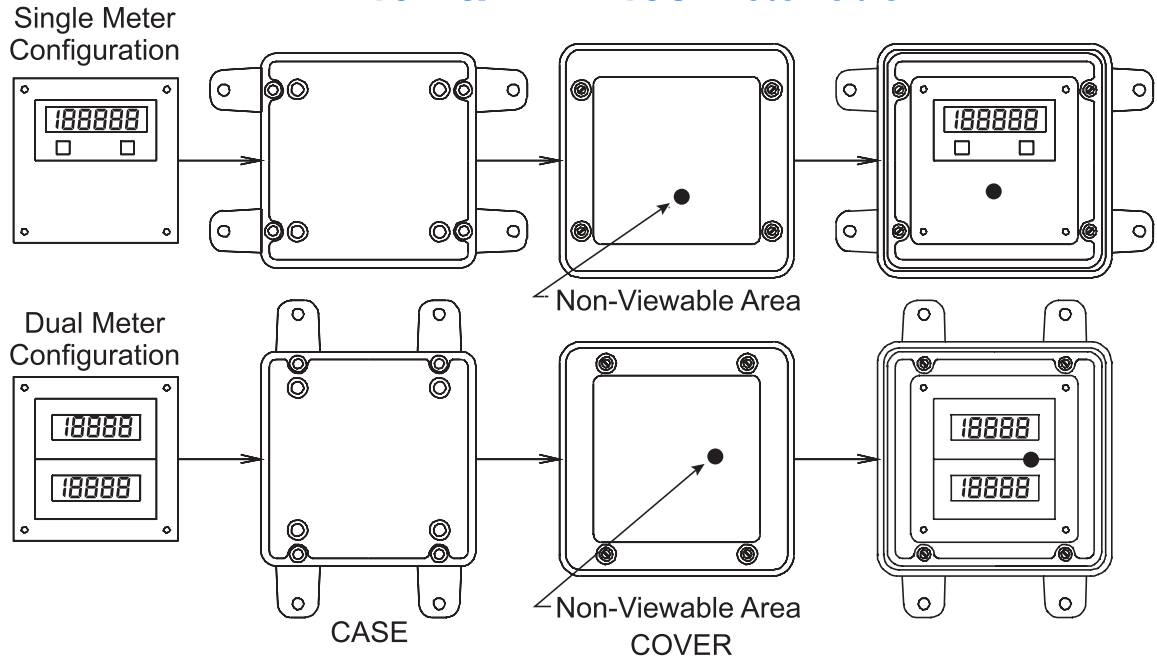


# NEMA 4X ENCLOSURES & NEMA 4X COVERS for Precision Digital Meters

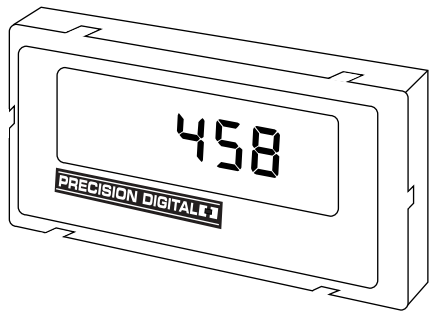
## NOTES:

1. Prior to drilling the hole for the conduit, align the display for best viewing through clear cover as shown.
2. Position the meter(s) such that the non-viewable area does not obstruct the displays.
3. Prior to drilling the hole for the conduit, consider the following: The dual meter configuration may be used for a single meter in the event that an additional meter is installed in the future. This will eliminate the need to re-position the case or conduit hole.

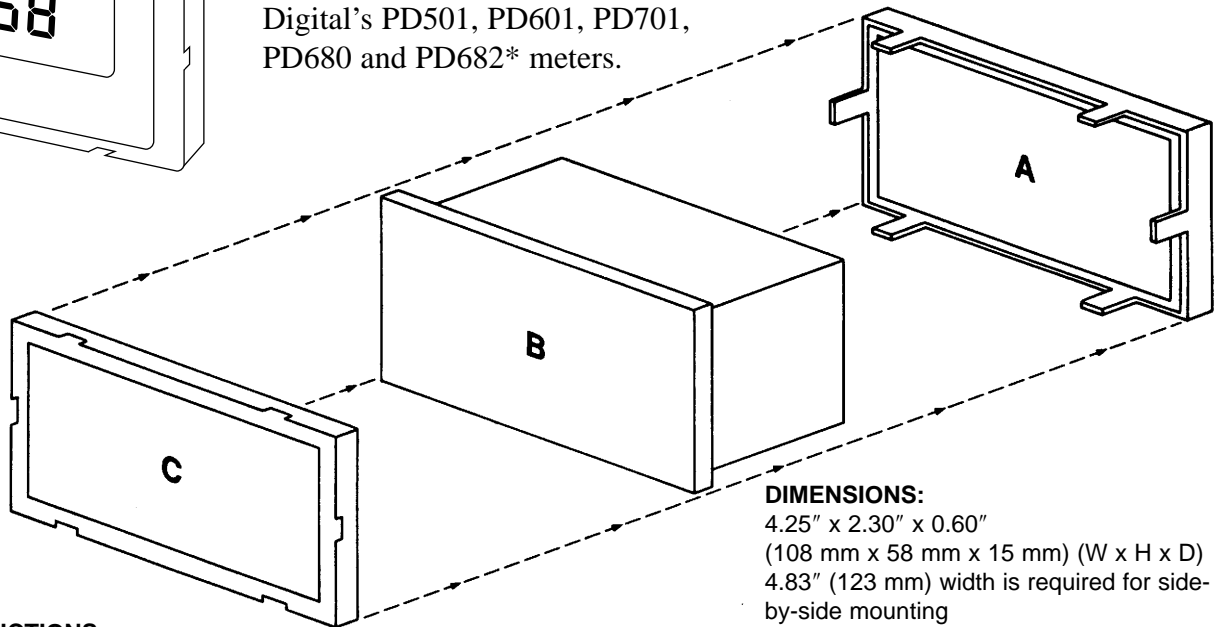
## PDA2407 & PDA2408 Installation



## Model PDA2405 NEMA 4X Cover for Precision Digital Meters



The Precision Digital Model PDA2405 NEMA 4X cover provides a convenient method to protect Precision Digital meters from dust, splashes of water, and other non-corrosive liquids. It may be used with Precision Digital's PD501, PD601, PD701, PD680 and PD682\* meters.



### DIMENSIONS:

4.25" x 2.30" x 0.60"

(108 mm x 58 mm x 15 mm) (W x H x D)

4.83" (123 mm) width is required for side-by-side mounting

### MATERIAL:

High impact plastic

### MOUNTING INSTRUCTIONS:

1. Slide meter (B) through clip piece (A) with clips facing the front of the meter.
2. Mount the meter in the panel with mounting brackets. Do not over tighten.
3. Press front cover (C) firmly over 6 clips until it locks in place.

\*PDA2405 is not FM Approved as NEMA 4X.

LIM2405-15 Rev C 02/02

PRECISION DIGITAL CORPORATION

19 Strathmore Road • Natick MA • 01760 • USA • Tel: (800) 343-1001 • Fax: (508) 655-8990



www.predig.com