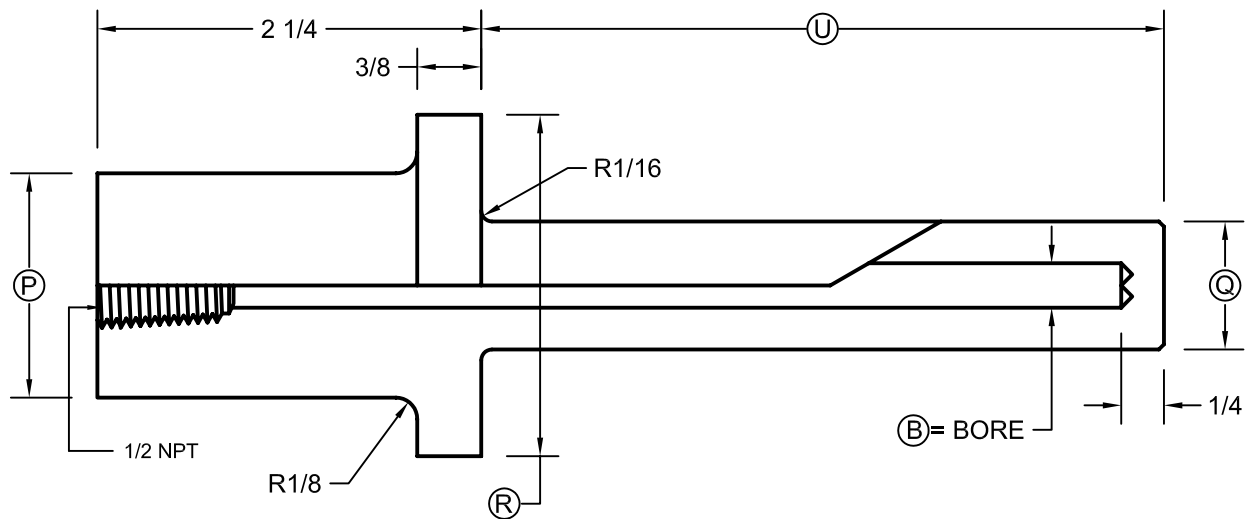


VAN STONE THERMOWELLS

FOR 1/4 AND 3/8 DIAMETER ELEMENTS



1" VAN STONE
FOR 1/4" DIAMETER ELEMENTS
R = 2" P = 1.315

PART NO.	S	U	Q	B
1" 260VS- U2	4	2	3/4	0.260
1" 260VS- U4	6	4	3/4	0.260
1" 260VS- U7	9	7	3/4	0.260
1" 260VS- U10	12	10	3/4	0.260
1" 260VS- U13	15	13	3/4	0.260
1" 260VS- U16	18	16	3/4	0.260
1" 260VS- U22	24	22	3/4	0.260

1" VAN STONE
FOR 3/8" DIAMETER ELEMENTS
R = 2" P = 1.315

PART NO.	S	U	Q	B
1" 385VS- U2	4	2	7/8	0.385
1" 385VS- U4	6	4	7/8	0.385
1" 385VS- U7	9	7	7/8	0.385
1" 385VS- U10	12	10	7/8	0.385
1" 385VS- U13	15	13	7/8	0.385
1" 385VS- U16	18	16	7/8	0.385
1" 385VS- U22	24	22	7/8	0.385

1 1/2" VAN STONE
FOR 1/4" DIAMETER ELEMENTS
R = 2 7/8" P = 1.900

PART NO.	S	U	Q	B
1 1/2" 260VS- U2	4	2	3/4	0.260
1 1/2" 260VS- U4	6	4	3/4	0.260
1 1/2" 260VS- U7	9	7	3/4	0.260
1 1/2" 260VS- U10	12	10	3/4	0.260
1 1/2" 260VS- U13	15	13	3/4	0.260
1 1/2" 260VS- U16	18	16	3/4	0.260
1 1/2" 260VS- U22	24	22	3/4	0.260

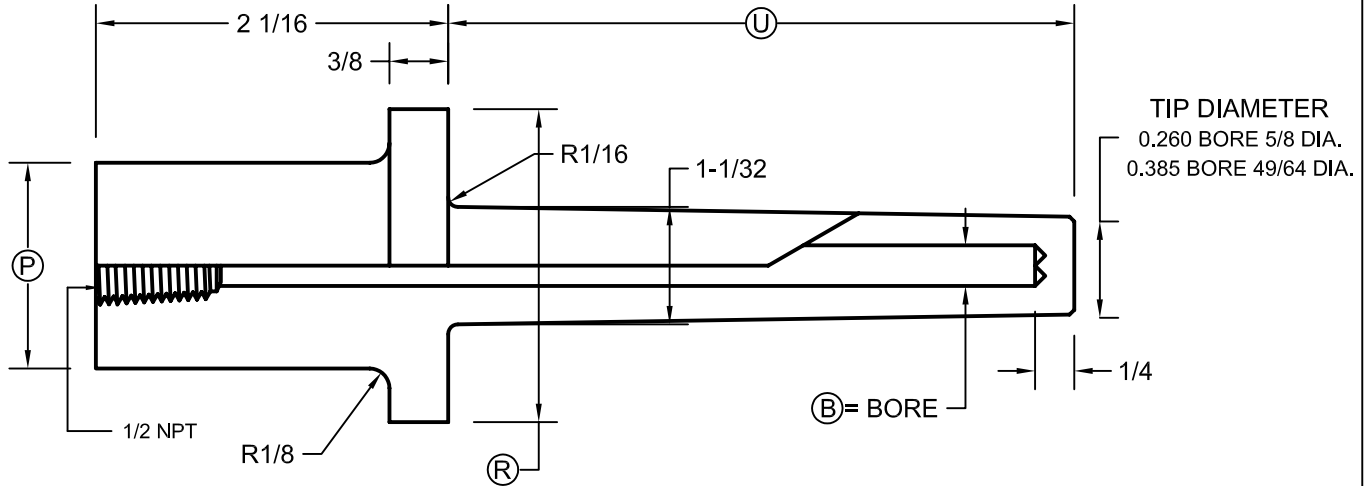
1 1/2" VAN STONE
FOR 3/8" DIAMETER ELEMENTS
R = 2 7/8" P = 1.900

PART NO.	S	U	Q	B
1 1/2" 385VS- U2	4	2	7/8	0.385
1 1/2" 385VS- U4	6	4	7/8	0.385
1 1/2" 385VS- U7	9	7	7/8	0.385
1 1/2" 385VS- U10	12	10	7/8	0.385
1 1/2" 385VS- U13	15	13	7/8	0.385
1 1/2" 385VS- U16	18	16	7/8	0.385
1 1/2" 385VS- U22	24	22	7/8	0.385

NOTE: S = STEM LENGTH

VAN STONE THERMOWELLS TAPER SHANK

FOR 1/4 AND 3/8 DIAMETER ELEMENTS



1" VAN STONE
FOR 1/4" DIAMETER ELEMENTS
R = 2" P = 1.315

PART NO.	S	U	B
1" 260HVS- U2	4	2	0.260
1" 260HVS- U4	6	4	0.260
1" 260HVS- U7	9	7	0.260
1" 260HVS- U10	12	10	0.260
1" 260HVS- U13	15	13	0.260
1" 260HVS- U16	18	16	0.260
1" 260HVS- U22	24	22	0.260

1" VAN STONE
FOR 3/8" DIAMETER ELEMENTS
R = 2" P = 1.315

PART NO.	S	U	B
1" 385VS- U2	4	2	0.385
1" 385VS- U4	6	4	0.385
1" 385VS- U7	9	7	0.385
1" 385VS- U10	12	10	0.385
1" 385VS- U13	15	13	0.385
1" 385VS- U16	18	16	0.385
1" 385VS- U22	24	22	0.385

1 1/2" VAN STONE
FOR 1/4" DIAMETER ELEMENTS
R = 2 7/8" P = 1.900

PART NO.	S	U	B
1 1/2" 260HVS- U2	4	2	0.260
1 1/2" 260HVS- U4	6	4	0.260
1 1/2" 260HVS- U7	9	7	0.260
1 1/2" 260HVS- U10	12	10	0.260
1 1/2" 260HVS- U13	15	13	0.260
1 1/2" 260HVS- U16	18	16	0.260
1 1/2" 260HVS- U22	24	22	0.260

1 1/2" VAN STONE
FOR 3/8" DIAMETER ELEMENTS
R = 2 7/8" P = 1.900

PART NO.	S	U	B
1 1/2" 385HVS- U2	4	2	0.385
1 1/2" 385HVS- U4	6	4	0.385
1 1/2" 385HVS- U7	9	7	0.385
1 1/2" 385HVS- U10	12	10	0.385
1 1/2" 385HVS- U13	15	13	0.385
1 1/2" 385HVS- U16	18	16	0.385
1 1/2" 385HVS- U22	24	22	0.385

NOTE: S = STEM LENGTH